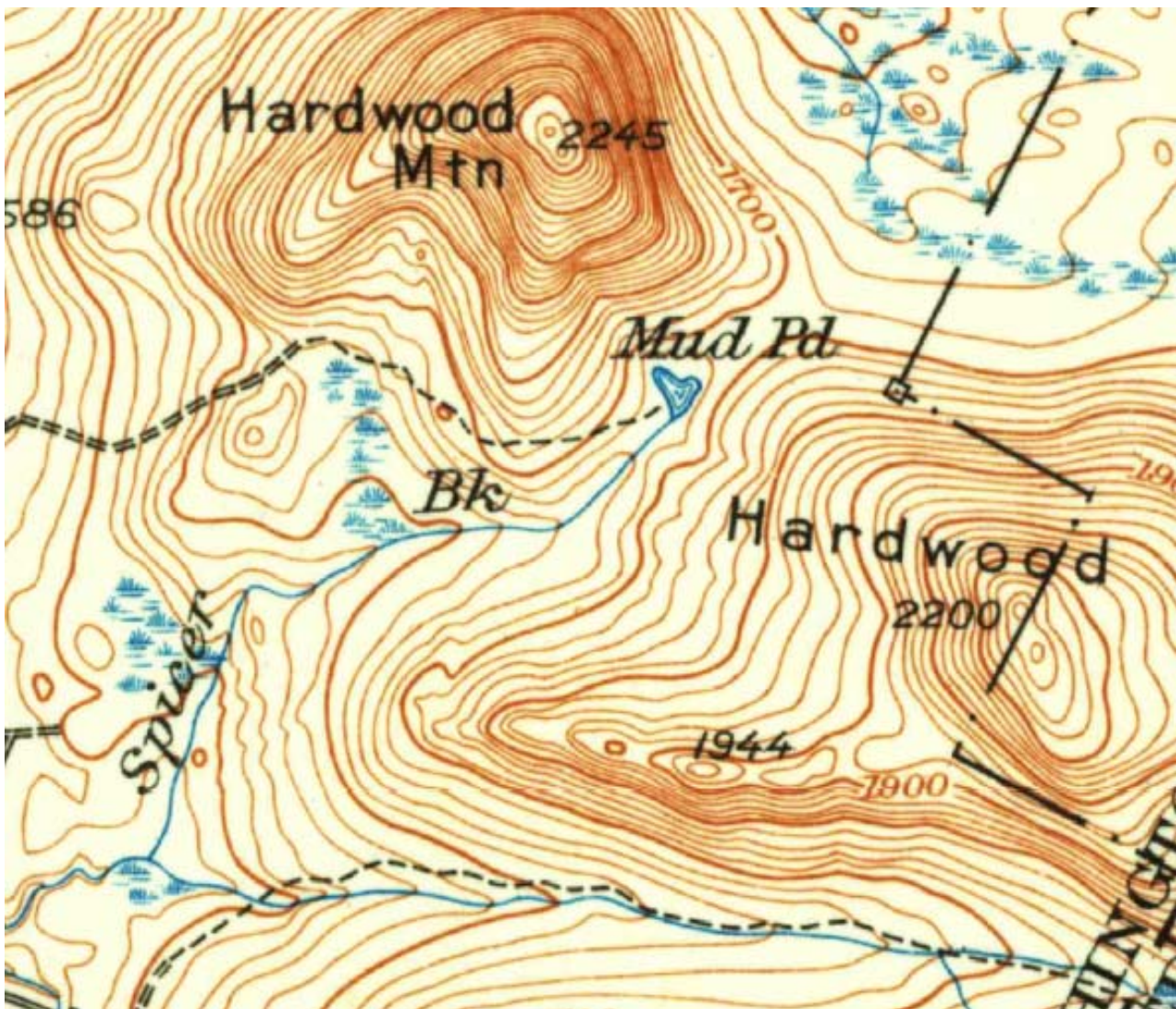


Name:

Hydro 8 Practice 2

Targets	1	2 (all of 1 plus)	3 (all of 2 plus)	4 (all of 3 plus)
LE 5.7 Preparedness	Does not complete formative or summative in an effortful and timely manner, is not engaged, does not arrive on time with class materials ready to learn, does not communicate when issues arise	Completes formative or summative in an effortful or timely manner, is sometimes engaged, sometimes arrives on time with class materials ready to learn, sometimes communicates when issues arise	Completes formative or summative in an effortful and timely manner, remains engaged, arrives on time with materials ready to learn, communicates when issues arise	Completes formative or summative in an effortful and timely manner, remains engaged, arrives on time with materials ready to learn, communicates when issues arise, and is reflective on strengths and challenges within your preparedness skill
LE 5.6 Precision	Recognizes the importance of products that are planned, edited, and completed with care	Attempts products that are planned, edited, and completed with care	Creates products that are planned, edited, and completed with minimal errors	Creates products that are planned, edited, and completed free from errors or need for revision
Hydro 8	I can identify the rivers within a watershed.	I can delineate a watershed by identifying the spaces between the headwaters of rivers.	I can delineate a watershed by identifying the high elevation points in the spaces between the headwaters of rivers.	I can delineate a watershed by identifying the high elevation points in the spaces between the headwaters of rivers and determine precise boundaries by looking at the shape of the contour lines.
MP4 Watersheds and Water Cycle	I can interpret elevations and features on contour maps	(all of 1 plus) I can identify and diagram a watershed	(all of 2 plus) I demonstrate an understanding of interactions between water and Earth's environment (including watersheds and water cycles)	(all of 3 plus) You nailed it !!

Draw the Watershed for Spicer Brook



Use your vocab sheet: Spicer brook is a _____ of Nasmith Brook.